

Stay in touch
with UNISON

🖱️ london.unison.org.uk

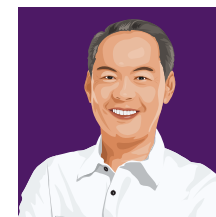
@ greaterlondonregion
@unison.co.uk

🐦 @unisontweets

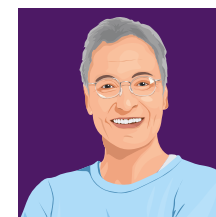
📘 /unisontheunion



UNISON
Greater London



Regional Democracy: UNISON Greater London



As a Trade Union, UNISON is a democratic organisation. Democracy is at the heart of everything we do: from what we campaign on, to the democratic structures within the union and the rules governing membership of our organisation.

All members of the national union belong to a local UNISON branch. Over 120,000 members in 125 local branches form UNISON Greater London Region. Our members are our strength and our democracy is how members make their voices heard.

National Executive Council

The National Executive Council (NEC) is the highest elected body in our union. Every two years, members in Greater London vote to elect our region's representatives to the NEC. They represent our interests at a national level and are invited to all regional meetings to report back on their work. In addition, members in Greater London (and all other regions) have the opportunity to elect representatives for their national service group seats (Health; Local Government; Higher Education; Energy etc) and the reserved seats for Black Members, Young Members and Disabled Members.

Regional Council

The Regional Council is the governing body of the region and all branches are invited to participate. It meets three times a year, including the Annual General Meeting, normally held in February. It elects the Regional lay leaders and committees, develops regional policies, ensures they are implemented and determines the region's objectives and priorities in line with the union's national rules, objectives and policies.

Regional Council Officers

Made up of the Regional Convenor, the Deputy Convenor, the Finance Convenor, the Equalities Convenor, the Publicity Convenor and the Young Members Convenor, the Regional Council Officers are the most senior elected positions in the region. They are elected at the Regional Council AGM and they chair meetings of the Regional Committee and Council.

Regional Committee

The Regional Committee is the operational body of the Regional Council. The Regional Committee exercises the decisions of the Regional Council between meetings and is accountable to Regional Council, to which it reports.

Regional Finance Team

The RFT is accountable to Regional Council for all finances relating to the lay member budget. It is composed of the Regional Convenor, the Deputy Convenor and the Finance Convenor.

Get involved

If you would like to get involved in the democracy of the region, attend Regional Council or be nominated to one of the committees, please speak to your Branch Secretary or Regional Organiser.

Contact:



Committees & Groups Within The Region

REGIONAL SUB COMMITTEES	
EDUCATION & TRAINING	Develops and monitors our activist education and member learning annual programme.
RECRUITMENT & ORGANISING	This Committee is responsible for developing the work of the region in respect of the retention, recruitment and organisation of our membership within all sectors.
HEALTH & SAFETY	This committee's function is to coordinate and develop campaigning for improved health & safety provision across Greater London.
EUROPE & INTERNATIONAL	Oversees our links with trade unions in other countries and coordinates with European and international campaigns on a wide range of issues.
WELFARE	UNISON Welfare is a vital part of our work which many members have benefited from. This committee coordinates this work in the region, liaising with Branch welfare officers and undertaking fundraising for 'There for You', UNISON's charity.

REGIONAL SELF ORGANISED GROUPS	
REGIONAL DIVERSITY FORUM	Co-ordinates and develops the region's work around diversity including producing the Regional Equality Strategy.
BLACK MEMBERS	UNISON supports networks of self organised groups (SOGs) in branches and regions across the union. Our SOGs campaign for equality in the workplace and for improvements to legislation in workplaces and the wider community. The SOGs are represented at Regional Council and most other regional committees, but are accountable to their respective national group.
DISABLED MEMBERS	
LGBT MEMBERS	
WOMEN'S COMMITTEE	

REGIONAL FORUMS	
RETIRED MEMBERS COMMITTEE	These two regional bodies are classed as Regional Forums. These groups are elected by young and retired members in the region at their own respective AGMs and these groups work on a wide range of issues relevant for these members.
YOUNG MEMBERS FORUM	
LABOUR LINK	UNISON is affiliated to the Labour Party and the Labour Link committee coordinates our joint campaigning work with the Party within our branches and across the region.

REGIONAL SERVICE GROUP COMMITTEES	
HEALTHCARE	UNISON represents people employed in all areas of public services, and in the region we organise our members into six service groups (SGs).
LOCAL GOVERNMENT	
WATER, ENERGY, ENVIRONMENT & TRANSPORT	
COMMUNITY	
HIGHER EDUCATION	



Regional Democracy in Unison Greater London

